

ELECTRICAL INSPECTION BULLETIN

B-26-806

Furnace Switch Locations

(Effective 2011/01/21)



Rule 26-806 requires that a furnace (117kW or less) be supplied from a single branch circuit (sub rule 1) which is equipped with a suitable disconnecting means (sub rule 5). This rule also requires that the disconnecting means be located so that it can be readily accessed without having to go near or to pass by the furnace.

The disconnecting means for the branch circuit shall be permitted to be the branch circuit breaker at the distribution panelboard provided it is located between the furnace and the point of entry to the area where the furnace is located. Or a separate switch located such that it can be accessed without having to pass near or close to the furnace.

The blower motor also requires a disconnecting means so consideration must also be given to Rule 28-604, "Location of Disconnecting Means", which requires the disconnecting means for the furnace blower motor to be located within sight of and within 9m of the blower motor. Where this requirement cannot be met the switch or circuit breaker must be capable of being locked in the open position.

Furnace disconnecting means must be in compliance with *both* Rule 26-806 and Rule 28-604.

The three diagrams on the following page indicate some acceptable locations for the furnace branch circuit and the blower motor disconnecting means.

The first diagram shows that the panelboard branch circuit breaker will satisfy both rules provided the breaker is within 9m of the blower motor. An additional separate switch located on the path from the stairs to the furnace is also acceptable.

The next 2 diagrams illustrate that a separate switch is required for the blower motor since the branch circuit breaker is not within sight and typically not lockable. The branch circuit breaker in the panel will meet the requirements of 26-806 for the furnace branch circuit disconnect. Where a separate switch is to be located due to the location of the branch circuit breaker, it shall comply with 26-806(7).

The possibility of a future wall around the furnace is not a factor until such a partition is installed.

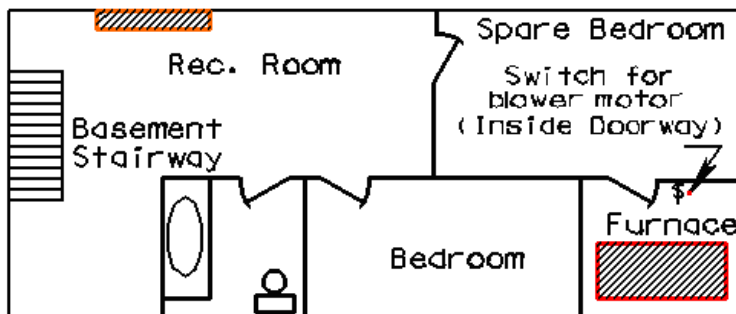
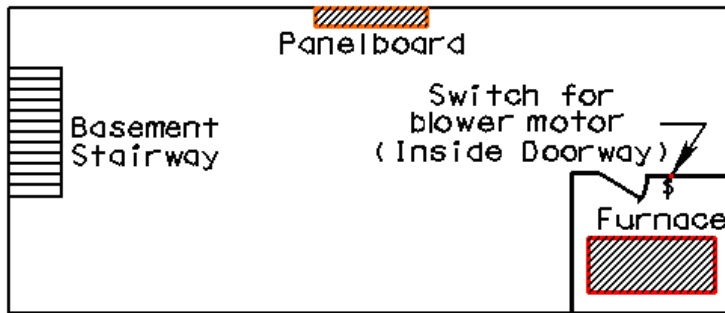
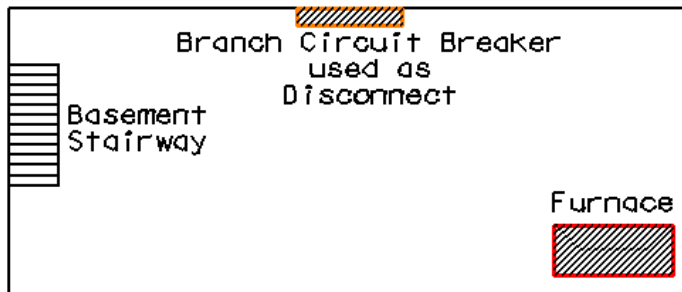
ELECTRICAL INSPECTION BULLETIN

B-26-806

Furnace Switch Locations



(Effective 2011/01/21)



Note: Additional switch(s) may be installed provided Rules 26-806 and 28-604 have been met.