

# Vehicle Practice

Reference:	Revision:
VP 03 23	
Page:	1 of 4
Date:	1988 08 17
Revised:	

## DANGEROUS GOODS PLACARD HOLDER INSTALLATION ON VEHICLES

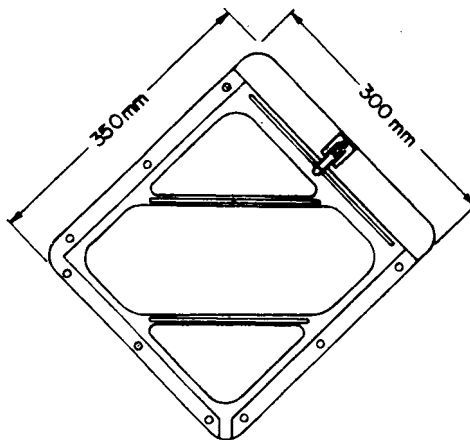
Practice:

### INTRODUCTION

When vehicles require the display of Dangerous Goods Placards (for signing requirements see Nova Scotia Power Handbook on Dangerous Goods), the holders and holder backing plates are to be standardized, located and attached to the vehicles as described herein.

#### 1.0 STANDARD SIGN HOLDERS

The following illustrated holder has been selected as the standard for the Company. It is aluminum and available from NSPI Stores under Cal. #02-73-3000.



#### 2.0 QUANTITY AND PLACEMENT OF HOLDERS

When sign holders and signs are placed on a vehicle, a sign must be clearly visible from the front, rear and each side (total of 4).

In general, only digger/derrick (Class 5) that transport explosives and/or detonators (blasting caps) and platform body trucks (Stores Class 3 & 6) require permanently mounted sign holders.

Pick-up trucks are to have sign holders installed on an "as required temporary basis". That is, when signing is required the pick-up truck will have temporary signs and holders attached and when the job is done the sign holders will be removed.

Sign holders are to be located approximately as shown in Figures 1, 2, 3 and 4.

Reference: VP 03 23	Revision:	<b>DANGEROUS GOODS PLACARD HOLDER INSTALLATION ON VEHICLES</b>
Page: 2 of 4		
Date: 1988 08 17		
Revised:		

### 3.0 **METHODS OF MOUNTING SIGN HOLDERS**

Permanent sign holders are to be directly mounted using small bolts or metal screws as required. Sign holders on the doors of fiberglass line bodies are to be attached with stainless steel bolts.

Temporary sign holder mountings are to be used on pick-up trucks. That is, holders for the sides will be on a backing plate fitted to a suitable side pocket stake and moved from vehicle to vehicle as required. Front and rear sign holders may be tied to the grill or the tailgate, however, a piece of padding must be used to prevent vehicle paint chaffing. A suggested method to prevent chaffing is to glue or secure a piece of carpet or foam to the rear of the placard.

Reference:

Revision:

VP 03 23

Page:

3 of 4

Date:

1988 08 17

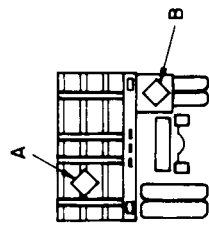
Revised:

# DANGEROUS GOODS PLACARD HOLDER INSTALLATION ON VEHICLES

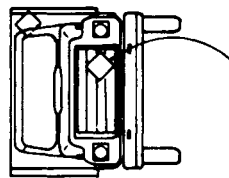
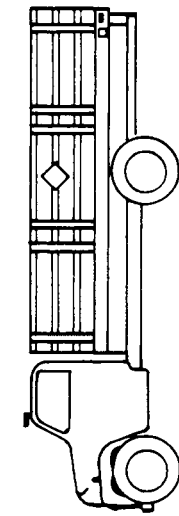
## STANDARD LOCATIONS OF DANGEROUS GOODS PLACARD ON VEHICLES

A) PERMANENT MOUNTED PLACARD LOCATIONS

FIG. 1

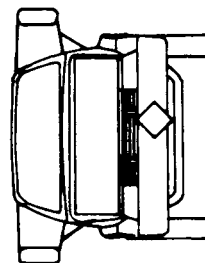
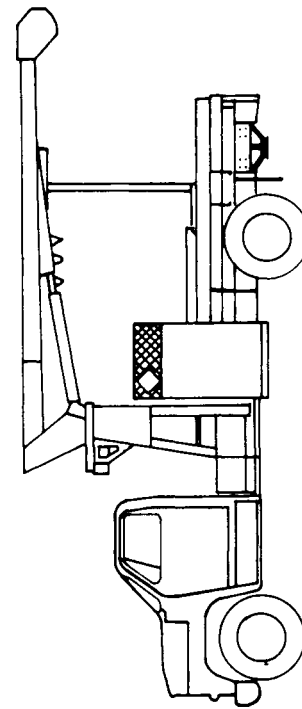
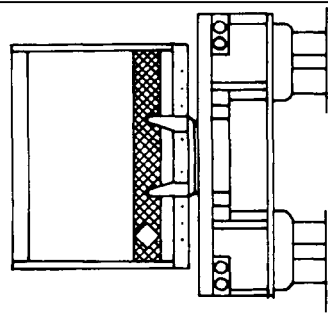


IF THERE IS NO TAILRACK, LOCATE THE REAR HOLDER IN POSITION 'B' OR A CLEARLY VISIBLE LOCATION.



ALTERNATE LOCATION IF THERE IS NO HEADBOARD

FIG. 2



Reference:

Revision:

VP 03 23

Page:

4 of 4

Date:

1988 08 17

Revised:

# DANGEROUS GOODS PLACARD HOLDER INSTALLATION ON VEHICLES

