

Vehicle Practice

Reference: VP 05 14	Revision: 2.1
Page: 1 of 1	
Date:	
Revised: 1989 09 21	

SHACKLE STORAGE ON DIGGER/DERRICK BOOM TIP WINCH

Practice:

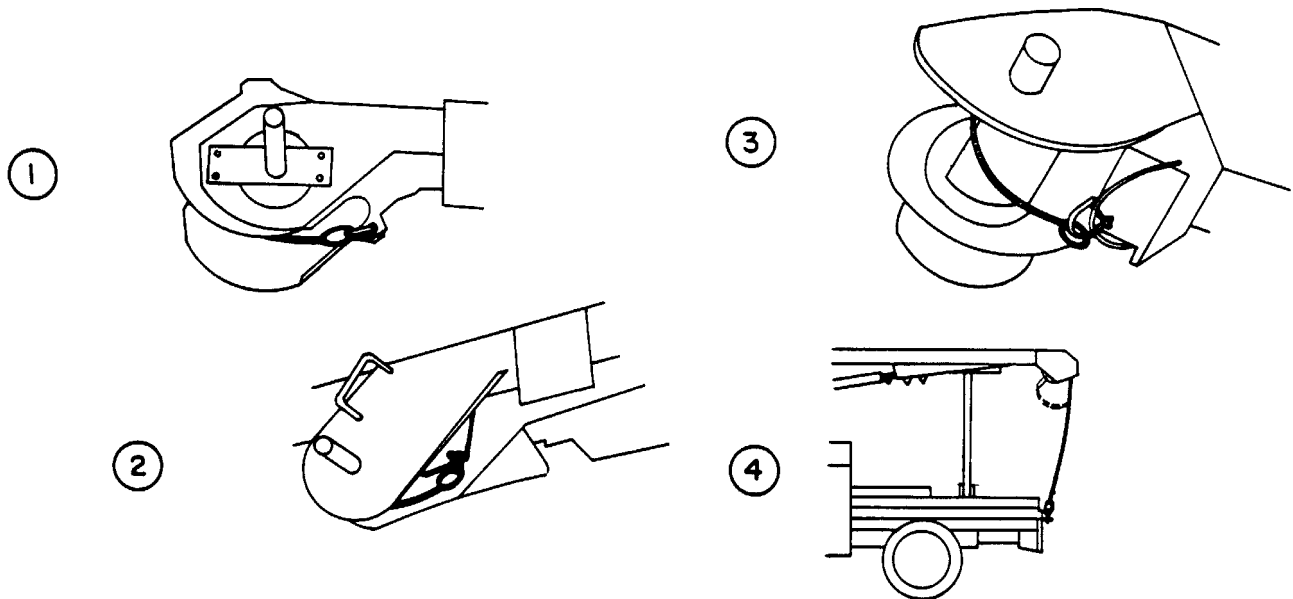
INTRODUCTION

The manufacturers have installed several different types of anchors or eyes to secure the load lines for two-part line lift on boom tip winch heads.

PROCEDURE

The following is different methods that can be used to secure the load lines on the boom tip winches using existing two part line anchors for attaching winch line and shackle. The eye bolt on the rear of the flatbed derricks may also be used to anchor the load line. Extreme care must be used that the load line is not over-tightened.

At no time is the load line allowed to hang free with a shackle attached. The shackle is to be anchored or removed.



Prepared by: D.C. West

Approved by: J.F. Baird

Fleet Services

